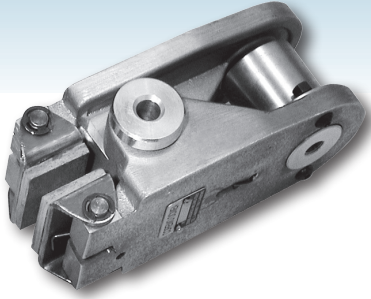
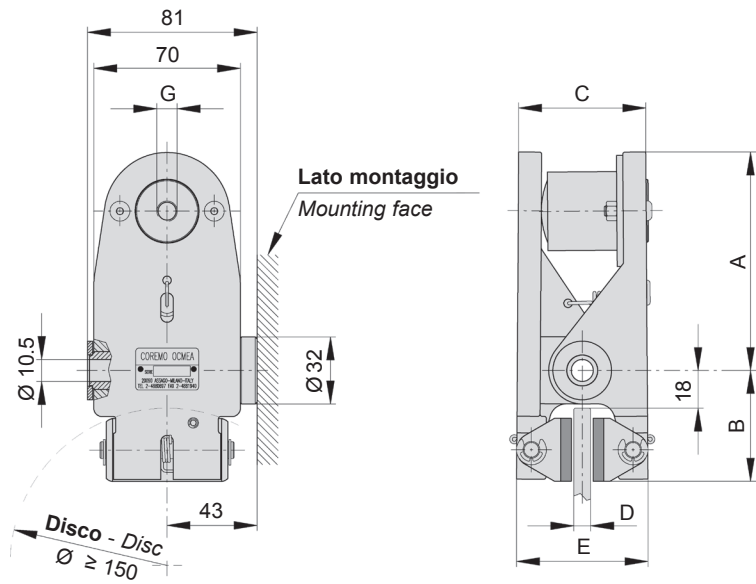


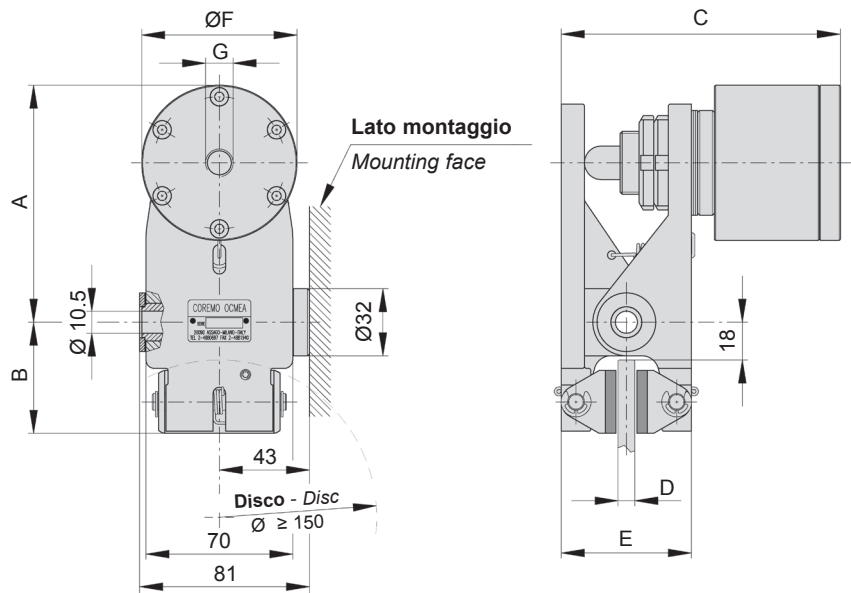
# MPA



**MPA**



**MPA-05 MPA-1**



## DIMENSIONI/DIMENSIONS

TIPO SIZE	Cod. Prodotto Product Number	A	B	C		D	E	ØF	G	Volume aria Air Volume dm <sup>3</sup>	Peso Weight kg
				min	max						
MPA	A2916	104	53	61	83	8	63	-	1/8"gas	0.0014	1.2
	A2918	106	52	50	71	12.7	68	-	1/8"gas	0.0014	1.2
MPA-05	A2920	113	53	133	154	8	62	74	1/4"gas	0.025	2
	A2922	120	52	143	152	12.7	68	74	1/4"gas	0.025	2
MPA-1	A2924	134	53	143	166	8	62	116	1/4"gas	0.1	2.3
	A2926	140	52	151	162	12.7	69	116	1/4"gas	0.1	2.3

**Attenzione:** La coppia iniziale può essere dal 30% al 50% in meno rispetto al valore nominale, fino all'assettamento del ferodo sul disco.

**Warning:** The initial torque on new units can be 30% to 50% less than the catalogue value until the friction facing and friction disc are lapped or worn in.

## Dati tecnici

Forza tangenziale F:

<b>MPA</b>	556 N a 6 bar
<b>MPA-05</b>	1516 N a 6 bar
<b>MPA-1</b>	3888 N a 6 bar

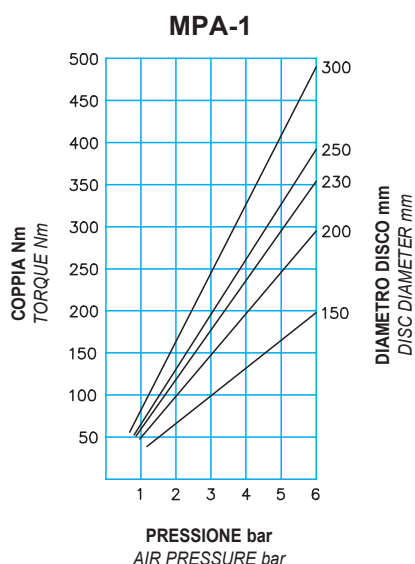
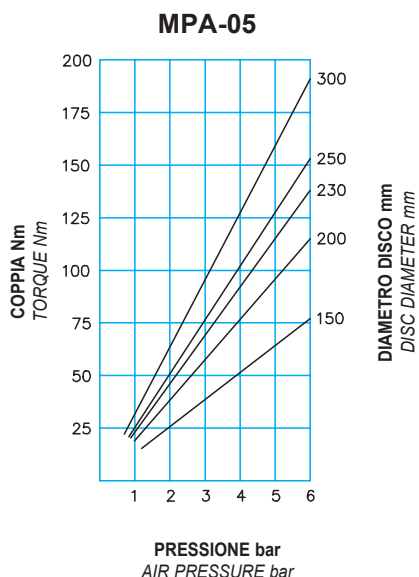
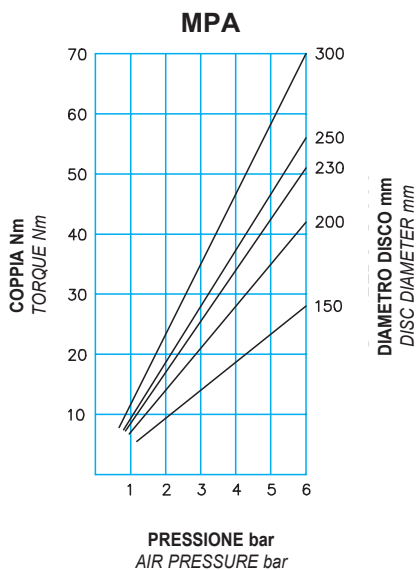
Coppia dinamica

$$= F \cdot (\text{raggio del disco in m} - 0.024) = \text{Nm}$$

Usura max totale: 6 mm

Spessore del ferodo nuovo: 5 mm

Dissipazione del calore in continuo  
Qc: 1 kW



## Technical data

Braking force F:

<b>MPA</b>	556 N at 6 bar
<b>MPA-05</b>	1516 N at 6 bar
<b>MPA-1</b>	3888 N at 6 bar

Dynamic torque

$$= F \cdot (\text{disc radius in m} - 0.024) = \text{Nm}$$

Max total wear: 6 mm

Thickness of new lining: 5 mm

Continuous thermal capacity  
Qc: 1 kW

## DIAGRAMMA/CHART

Dissipazione di calore per frenatura di emergenza

Thermal capacity for emergency stop

