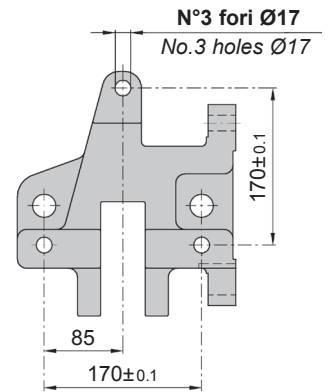
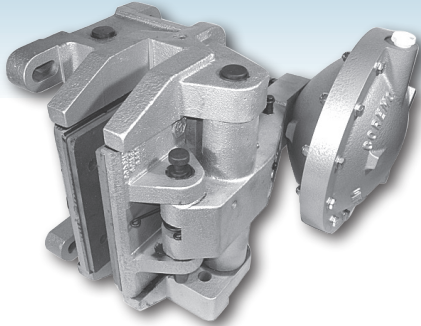
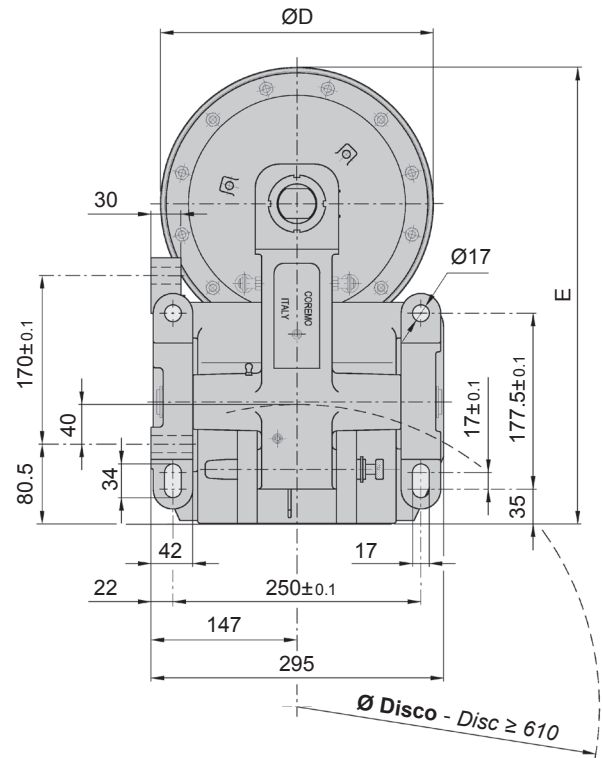
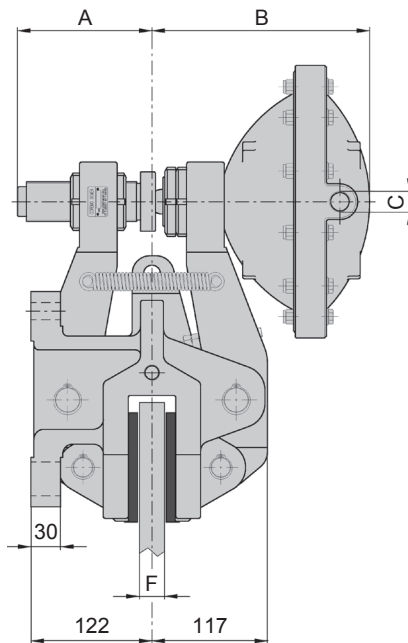


EL



Vista montaggio frontale
Frontal mounting view



DIMENSIONI/DIMENSIONS

TIPO SIZE	Cod. Prodotto Product Number	A	B	C	ØD	E	F	Volume aria Air Volume dm ³	Peso Weight kg
EL3	A3575	126	180	3/8"gas	184	415	25.4	0.4	60
	A3578	126	180	3/8"gas	184	415	40	0.4	60
EL4	A3581	135.5	219.5	1/2"gas	275	460	25.4	1.2	66
	A3584	135.5	219.5	1/2"gas	275	460	40	1.2	66

Attenzione: La coppia iniziale può essere dal 30% al 50% in meno rispetto al valore nominale, fino all'assestamento del ferodo sul disco.

Warning: The initial torque on new units can be 30% to 50% less than the catalogue value until the friction facing and friction disc are lapped or worn in.

Dati tecnici

Forza tangenziale F:

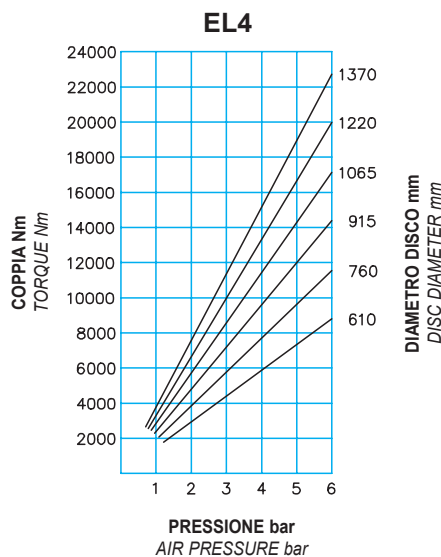
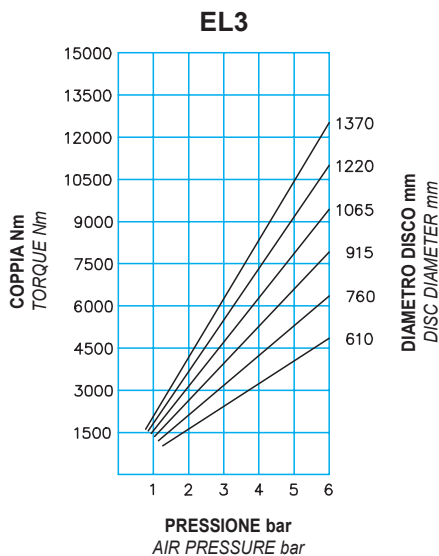
- EL3** 20180 N a 6 bar
- EL4** 36600 N a 6 bar

Coppia dinamica
 = $F \cdot (\text{raggio del disco in m} - 0.065) = \text{Nm}$

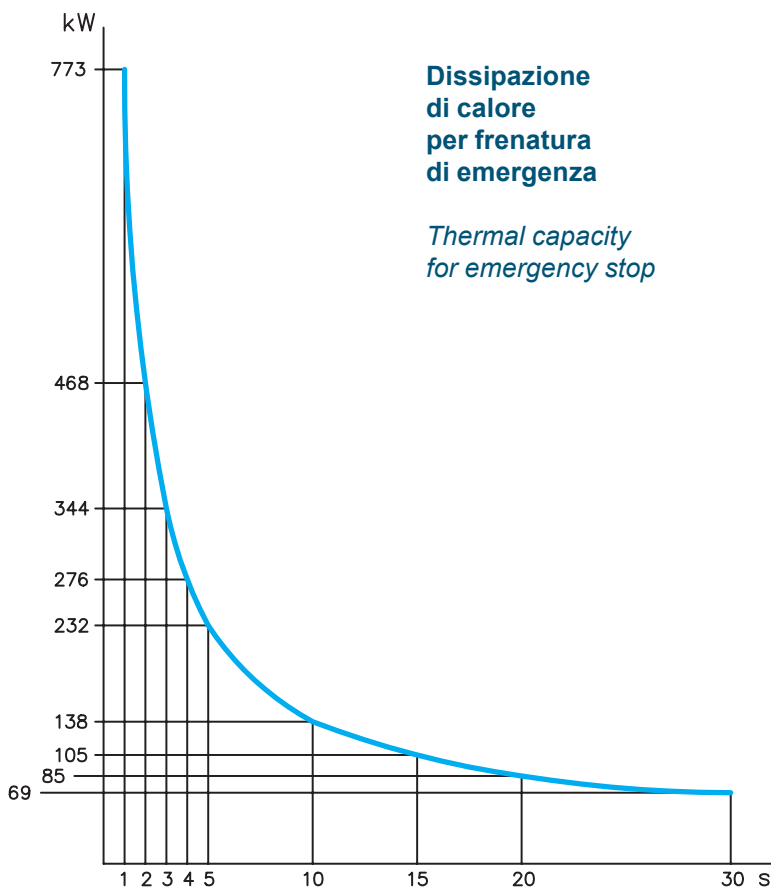
Usura max totale: 12 mm

Spessore del ferodo nuovo: 13 mm

Dissipazione del calore in continuo
 Qc: 20 kW



DIAGRAMMA/CHART



Technical data

Braking force F:

- EL3** 20180 N at 6 bar
- EL4** 36600 N at 6 bar

Dynamic torque
 = $F \cdot (\text{disc radius in m} - 0.065) = \text{Nm}$

Max total wear: 12 mm

Thickness of new lining: 13 mm

Continuous thermal capacity
 Qc: 20 kW