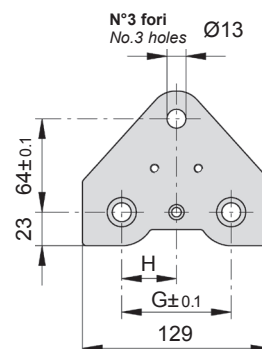
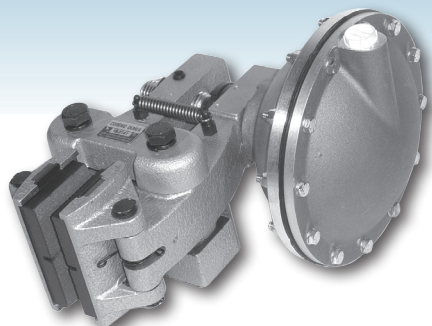
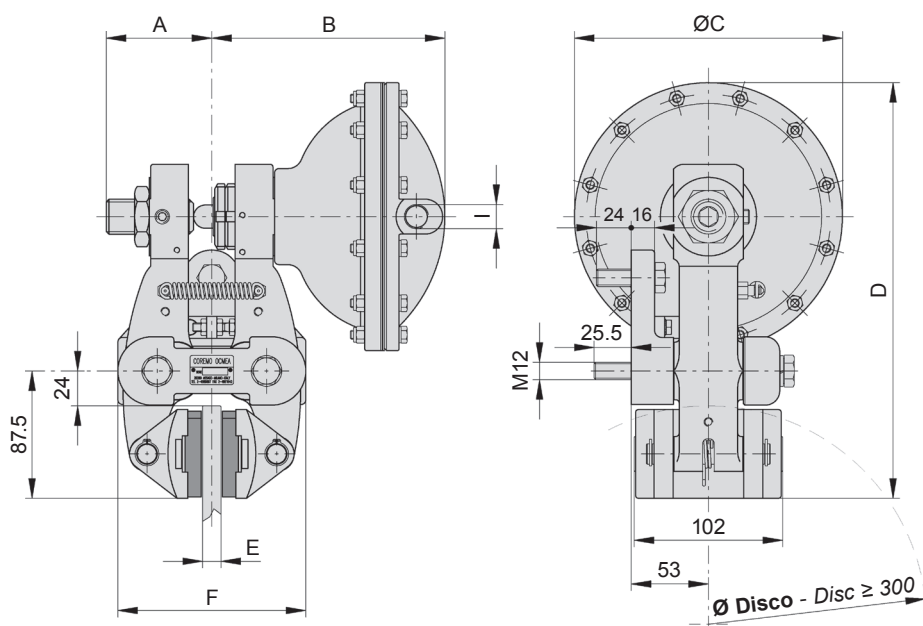


D



Vista base di montaggio
View on caliper base



DIMENSIONI/DIMENSIONS

TIPO SIZE	Cod. Prodotto Product Number	A	B	ØC	D	E	F	G	H	I	Volume aria Air Volume dm ³	Peso Weight kg
D05	A2398	75	107	74	230.5	12.7	129	75	37.5	1/4"gas	0.025	9.5
	A2406	74.5	109	74	232.5	25.4	132	84	42	1/4"gas	0.025	9.5
	A2414	86	116	74	230.5	30	140	75	37.5	1/4"gas	0.025	9.5
	A2422	81.5	120.5	74	230.5	40	149	84	42	1/4"gas	0.025	9.5
D1	A2430	72.5	119.5	116	251.5	12.7	129	75	37.5	1/4"gas	0.1	9.8
	A2438	72	120	116	253	25.4	132	84	42	1/4"gas	0.1	9.8
	A2446	83.5	128.5	116	251.5	30	140	75	37.5	1/4"gas	0.1	9.8
	A2454	79	133	116	251.5	40	149	84	42	1/4"gas	0.1	9.8
D2	A2462	72.5	141.5	142	264.5	12.7	129	75	37.5	3/8"gas	0.2	10.6
	A2470	72	142	142	267.5	25.4	132	84	42	3/8"gas	0.2	10.6
	A2478	83.5	150.5	142	264.5	30	140	75	37.5	3/8"gas	0.2	10.6
	A2486	79	155	142	264.5	40	149	84	42	3/8"gas	0.2	10.6
D3	A2494	72.5	160	184	285.5	12.7	129	75	37.5	3/8"gas	0.4	11.8
	A2502	72	161	184	289	25.4	132	84	42	3/8"gas	0.4	11.8
	A2510	83.5	169	184	285.5	30	140	75	37.5	3/8"gas	0.4	11.8
	A2518	79	174	184	285.5	40	149	84	42	3/8"gas	0.4	11.8

Attenzione: La coppia iniziale può essere dal 30% al 50% in meno rispetto al valore nominale, fino all'assettamento del ferodo sul disco.

Warning: The initial torque on new units can be 30% to 50% less than the catalogue value until the friction facing and friction disc are lapped or worn in.

Dati tecnici

Forza tangenziale F:

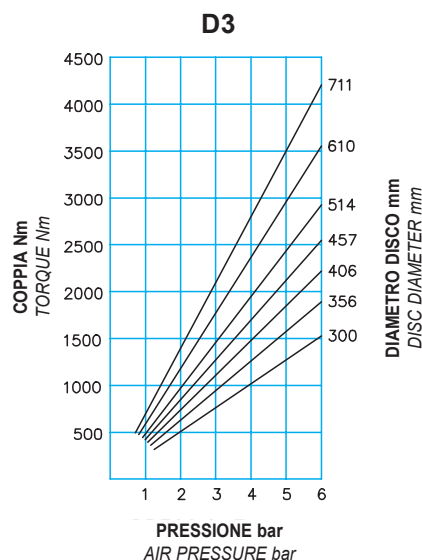
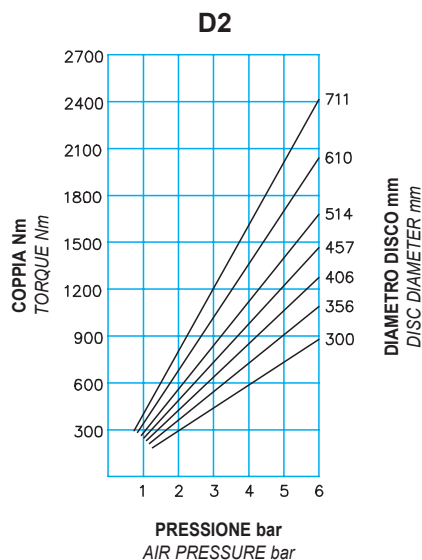
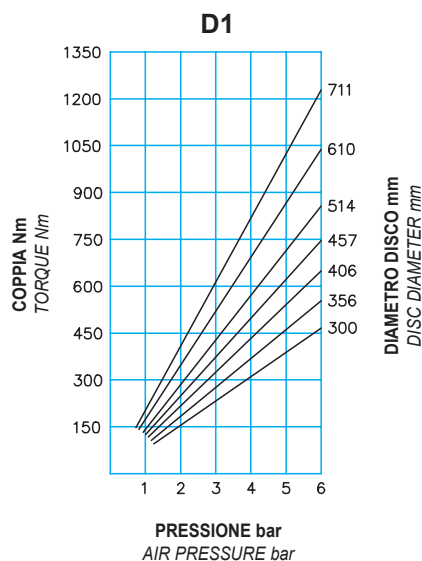
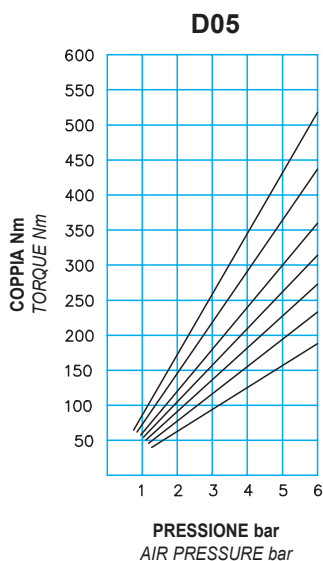
D05	1600 N a 6 bar
D1	3800 N a 6 bar
D2	7500 N a 6 bar
D3	12700 N a 6 bar

Coppia dinamica
 $= F \cdot (\text{raggio del disco in m} - 0.033) = \text{Nm}$

Usura max totale: 12 mm

Spessore del ferodo nuovo: 11 mm

Dissipazione del calore in continuo
 Qc: 3.4 kW



Technical data

Braking force F:

D05	1600 N at 6 bar
D1	3800 N at 6 bar
D2	7500 N at 6 bar
D3	12700 N at 6 bar

Dynamic torque
 $= F \cdot (\text{disc radius in m} - 0.033) = \text{Nm}$

Max total wear: 12 mm

Thickness of new lining: 11 mm

Continuous thermal capacity
 Qc: 3.4 kW

DIAGRAMMA/CHART

Dissipazione
 di calore
 per frenatura
 di emergenza

Thermal capacity
 for emergency stop

