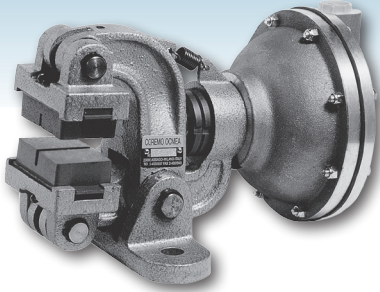
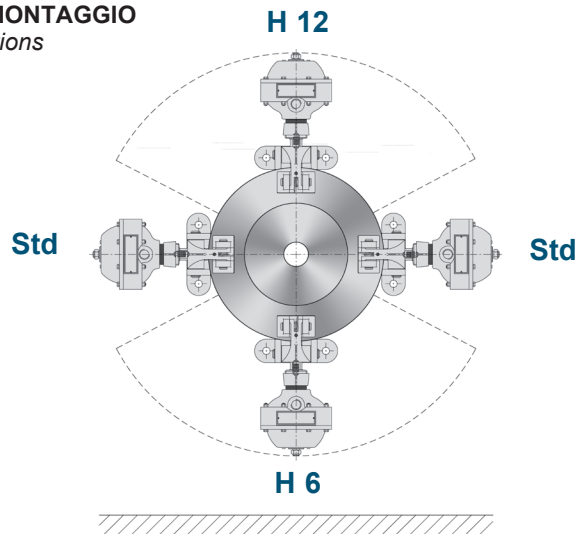


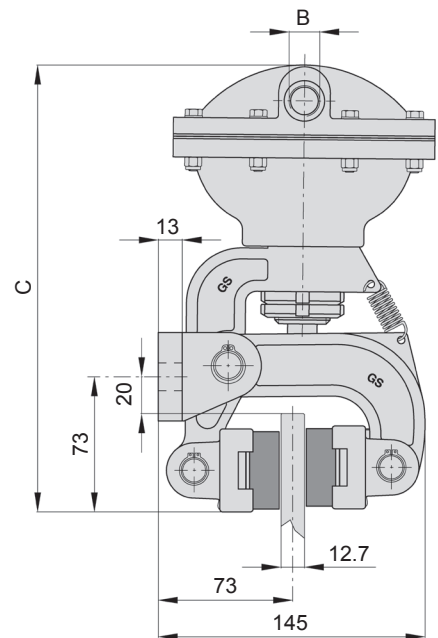
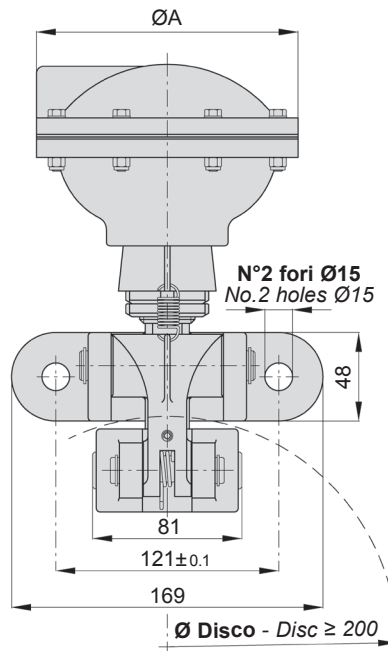
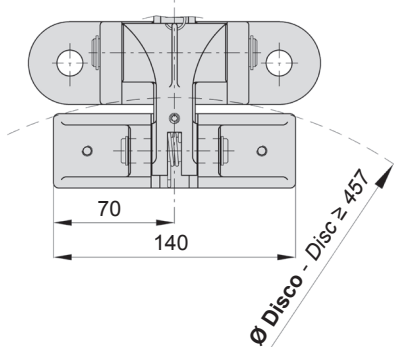
# B



**SCHEMA DI MONTAGGIO**  
Mounting positions



**Versione pattino doppio**  
Double pad version



## DIMENSIONI/DIMENSIONS

TIPO SIZE	Cod. Prodotto Product Number						ØA	B	C	Volume aria Air Volume dm <sup>3</sup>	Peso Weight kg
	Std	Std S.U.	H6	H6 S.U.	H12	H12 S.U.					
B05	A2014	A2015	A2348	A2349	A2354	A2355	74	1/4"gas	210.5	0.025	5.3
B1	A2020	A2021	A2038	A2039	A2056	A2057	116	1/4"gas	221	0.1	5.5
B2	A2026	A2027	A2044	A2045	A2062	A2063	142	3/8"gas	243	0.2	6.3
<p>S.P. = Produzione Standard / Standard Production S.U. = Con segnalatore di usura / With Wear Indicator</p>											

**Attenzione:** La coppia iniziale può essere dal 30% al 50% in meno rispetto al valore nominale, fino all'assestamento del ferodo sul disco.

**Warning:** The initial torque on new units can be 30% to 50% less than the catalogue value until the friction facing and friction disc are lapped or worn in.

## Dati tecnici

Forza tangenziale F:

<b>B05</b>	670 N a 6 bar
<b>B1</b>	1800 N a 6 bar
<b>B2</b>	3550 N a 6 bar

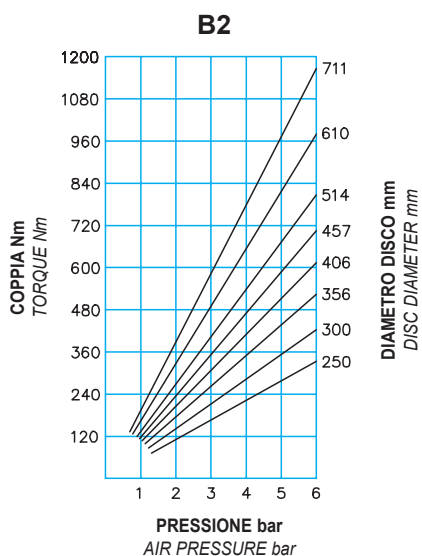
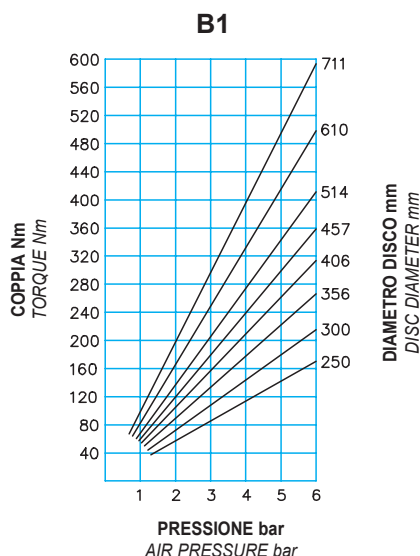
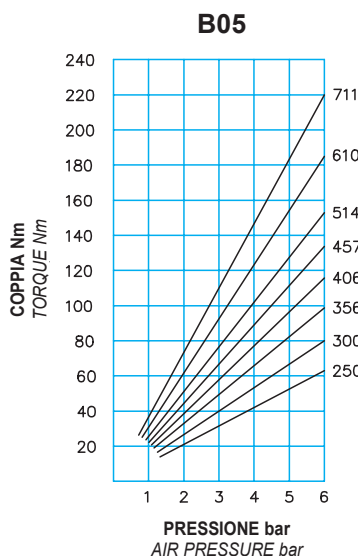
Coppia dinamica  
 $= F \cdot (\text{raggio del disco in m} - 0.032) = \text{Nm}$

Usura max totale: 14 mm

Spessore del ferodo nuovo: 16 mm

Dissipazione del calore in continuo  
 Qc: 1.7 kW

Dissipazione del calore in continuo  
 con pattino doppio  
 Qc: 2.7 kW



## Technical data

Braking force F:

<b>B05</b>	670 N at 6 bar
<b>B1</b>	1800 N at 6 bar
<b>B2</b>	3550 N at 6 bar

Dynamic torque  
 $= F \cdot (\text{disc radius in m} - 0.032) = \text{Nm}$

Max total wear: 14 mm

Thickness of new lining: 16 mm

Continuous thermal capacity  
 Qc: 1.7 kW

Continuous thermal capacity  
 for double pad version  
 Qc: 2.7 kW

## DIAGRAMMA/CHART

Dissipazione di calore per frenatura di emergenza

Thermal capacity for emergency stop

